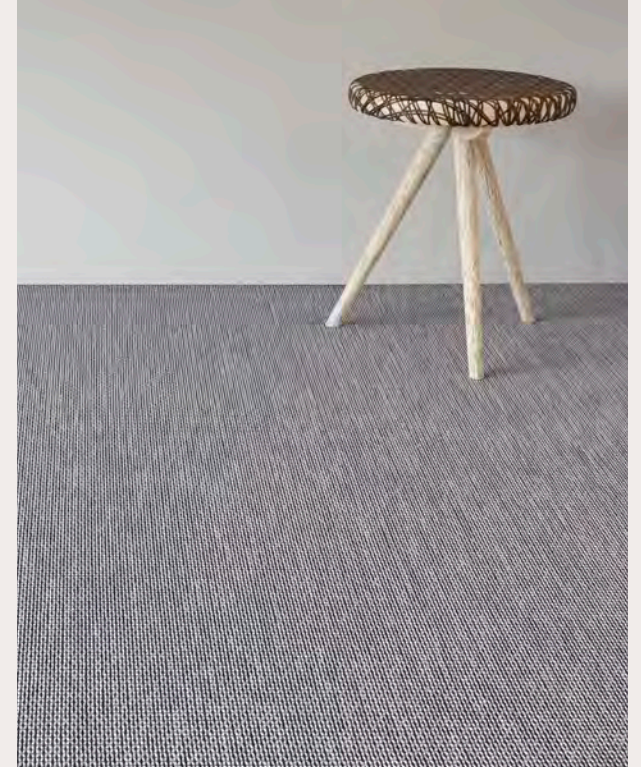


chilewich®

# Introducing Wabi Sabi



Available in Rugs, Wall Textiles, and Window Coverings

chilewich.

Inspired by the natural *igusa* (rush) woven covers of tatami, the traditional Japanese floor mats, this especially substantial weave is both orderly and organic. The richly hued weft yarns form gently alternating angles in the paired bi-color bundles of warp yarns, creating a lively yet intricate texture for floors, walls, and windows.



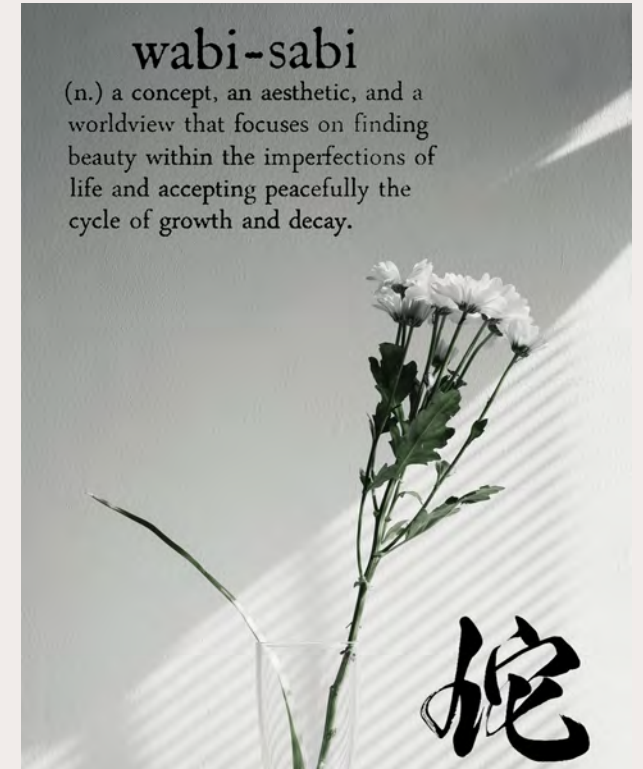
Tatami mats have a rich history in Japan, dating at least as far back as the Nara period (710 - 794).

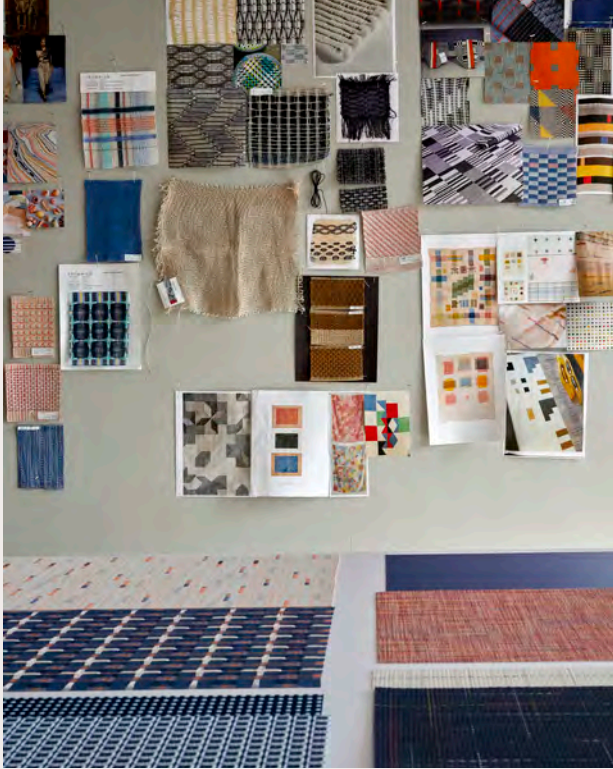


In the 16th century, the tea master Sen no Rikyu refined the Japanese tea ceremony with the use of small, rustic tea rooms and natural materials, including tatami.



Rikyu was instrumental in popularizing *wabi-sabi*, the art of finding beauty in imperfection and profundity in nature.





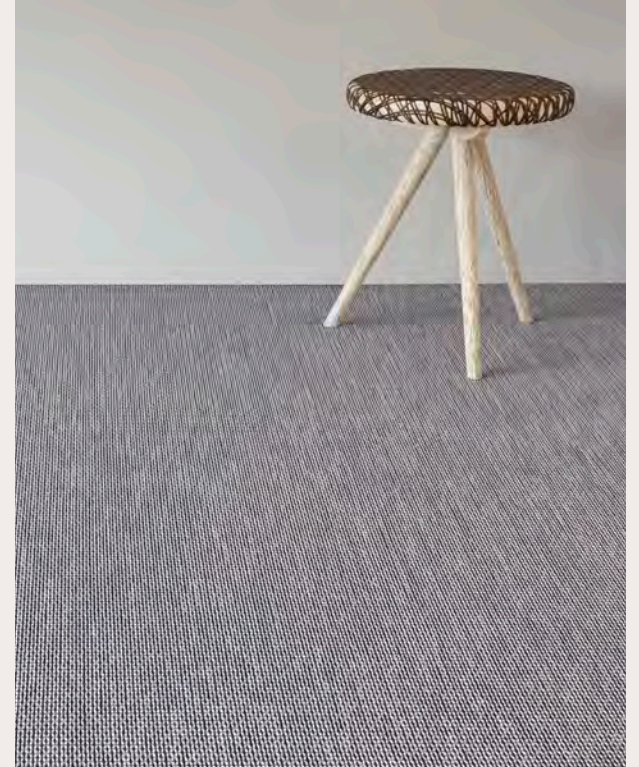
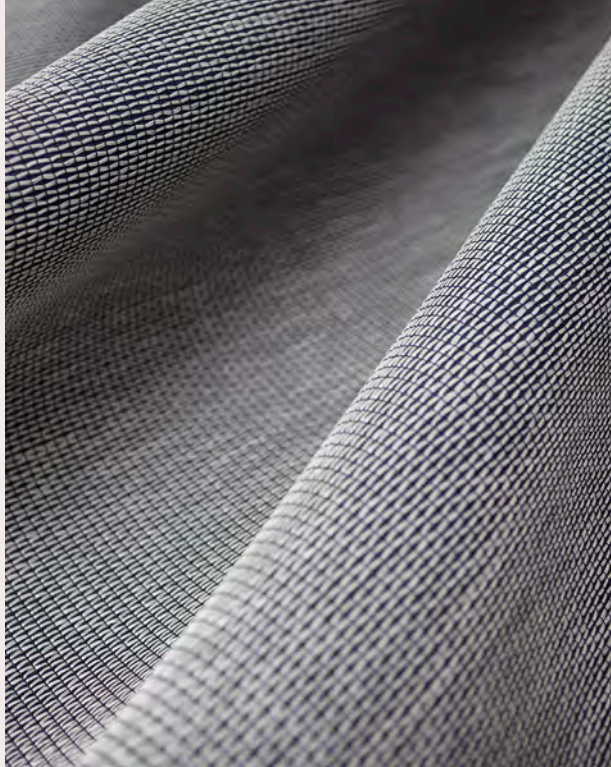
In the Chilewich Design Studio, New York City

# Wabi Sabi / Bright Blue



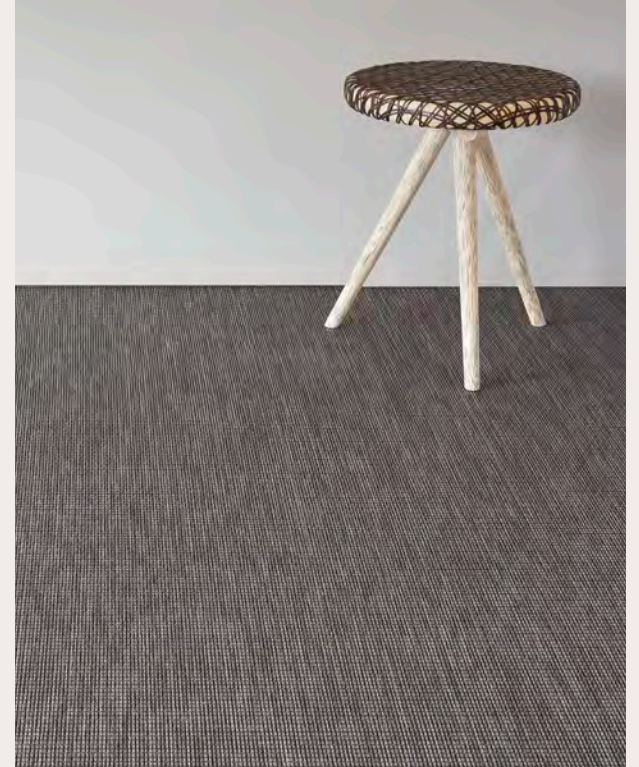


# Wabi Sabi / Indigo

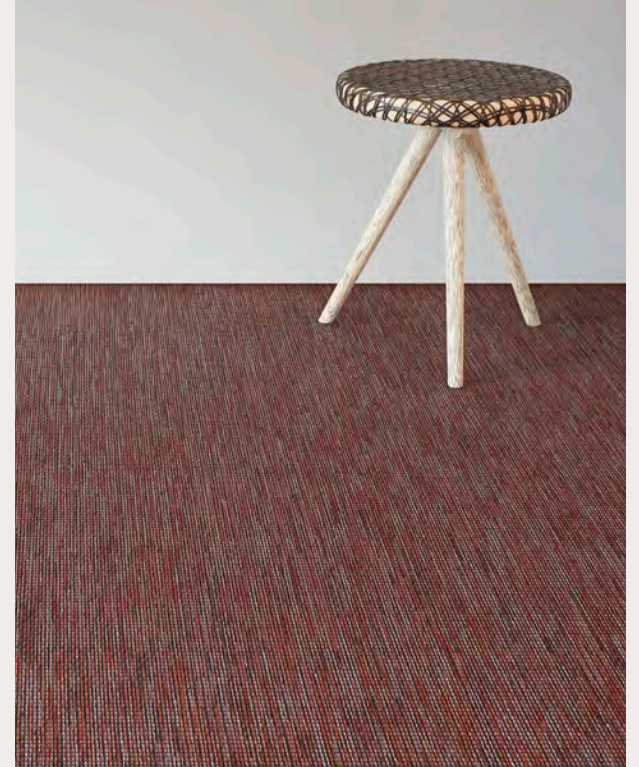


chilewich.

# Wabi Sabi / Mica



# Wabi Sabi / Sienna



chilewich.

# Wabi Sabi Wall Textiles



chilewich.

# Wabi Sabi Rugs



chilewich.

chilewich®